

SENTINEL FILTERS

The Sentinel filter range offers protection against hazardous gas, vapour and particulates within a wide variety of industries. Fully compatible with the Sentinel Full Face and Half Mask, the ergonomic filters offer incredibly low breathing resistance with optimised volume when fitted.

FEATURES & BENEFITS

- ✓ Gas filters are snowstorm filled to optimise space and volume, resulting in a smaller light weight casing that limits obstruction of view when fitted
- ✓ Particulate P3S & P3H contain pleated filter media, providing more surface area for reduced breathing resistance
- ✓ Sentinel filters are fitted with a simple connection which easily click into position
- ✓ Less than 115g, all filter combinations are light weight and can be used on both Full Face and Half Mask
- ✓ The P3P Filter is tested to 'R', allowing the use for more than one shift



Filter: ABEK1



Filter: A1

Filter: A2

Filter: P3 H

Filter: P3 S



**MADE IN
THE UK**

FILTER SELECTION

FILTER TYPE	COLOUR DESIGNATION	MAIN AREA OF APPLICATION
P3 R	White	Particle "R" marking means that the particle filters are suitable for reuse against aerosols (Several Work Shifts)
A	Brown	Organic gases and vapours with boiling point >65°C
B	Grey	Inorganic gases and vapours
E	Yellow	Sulphur Dioxide and other acidic gases and vapours
K	Green	Ammonia and organic Ammonia derivatives

CERTIFICATION

**EN 143:2000 + A1:2006
& EN 14387:2021**



ORDERING INFORMATION

P3S:	ASRAS0003BF	A1:	ASRAS0005BZ
P3H:	ASRAS0003BH	A2:	ASRAS0006BZ
P3P:	ASRAS0004BZ	ABEK1:	ASRAS0007BZ
P1P:	ASRAS0037AZ		

MATERIAL

PARTICULATE FILTER (P3S, P3H):	FIBREGLASS
PARTICULATE FILTER CASE (P3S, P3H):	ABS
P3P FILTER:	POLYPROPYLENE
P1P FILTER:	POLYPROPYLENE
GAS FILTER:	ACTIVATED CARBON
GAS FILTER CASE:	ABS

DURATION OF USE

The duration of use of a filter depends on its load, e.g. type and concentration of contaminant, the wearer's breathing rate and other factors. A greater load will reduce the duration of use.

GAS FILTERS

The presence of odour, taste and/or irritation indicates that the gas filter no longer works and must be replaced (no later than 6 months after the original packaging has been opened).

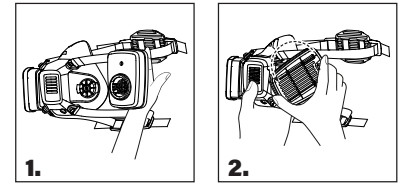
PARTICULATE FILTERS

Particulate and combined filters must be replaced at the latest when the breathing resistance becomes too high.

FITTING INSTRUCTIONS

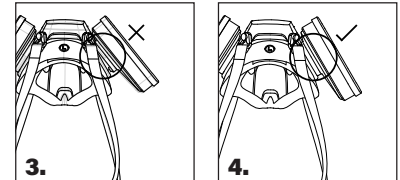
Attaching filters to mask

1. Check the integrity of the mask connector (seal on the full face mask or mask surface on the, half mask); if worn away or damaged, replace the seal/mask as appropriate.
2. Push the filter onto the mask connector, with the tabs on the filter connector aligning with the respective tabs on the filter body [See Diagram 1].
3. Rotate the filter clockwise until the filter clicks into place [See Diagram 2].
4. Make sure the filter is correctly seated [see Diagram 3 and 4].



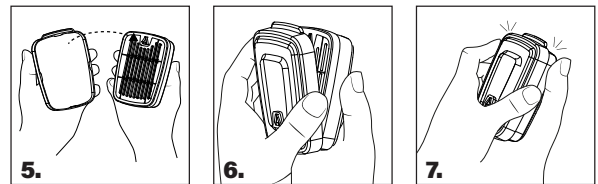
Combination filters

1. To assemble combination gas, vapour and particulate filters, insert the particulate P3-P or P1-P filter into the filter retaining cover as shown; marking should be visible once fitted to the filter (see diagram 5).
2. Push the gas filter body into the retaining cover, ensuring a correct fit. Ensure all retaining cover clips are firmly in place on the gas filter. [See Diagram 6].
3. Assemble the filter body onto the mask as described in these instructions as normal [See Diagram 7].



Removing the filters from the mask

1. Rotate the filter anticlockwise until loose
2. Lift the filter away from the mask



SUITABLE APPLICATIONS

FILTER	TYPE OF FILTER	STANDARD	APF**	HAZARD	INDUSTRY	
ASRAS0003BF	P3 Filters - Standard Size	EN 143:2000 + A1 2006 P3 R	20xWEL* HALF MASK 40xWEL* FULL FACE MASK	Protects from non-toxic dusts and oil/water based particulates	Agriculture Laboratory and Disease Control Pharmaceutical Industry Welding work Woodworking Underground Civil Engineering	Mining Manufacture of Batteries (Ni-Cad) Disposal of Toxic Waste Cutting and Casting of Metals Craft Work Construction
ASRAS0003BH	P3 Filters - High Capacity	EN 143:2000 + A1 2006 P3 R	20xWEL* HALF MASK 40xWEL* FULL FACE MASK			
ASRAS0005BZ	A1 Filters	EN 14387:2021	10xWEL* HALF MASK 20xWEL* FULL FACE MASK	Protects from organic vapours	Paint and Varnish Manufacture Welding Agriculture Transportation	Automotive Ink & Dye Manufacture Aerospace Petrochemical refining
ASRAS0006BZ	A2 Filters	EN 14387:2021	10xWEL* HALF MASK 20xWEL* FULL FACE MASK			
ASRAS0007BZ	ABEK1 Filters	EN 14387:2021	10xWEL* HALF MASK 20xWEL* FULL FACE MASK	Protects from organic vapours, Inorganic, acid gases, ammonia & ammoniacal derivatives	All of the above plus: Electrolytic processes	Acid Cleaning Refrigeration
ASRAS0004BZ	P3P Filters	EN 14387:2021	Combine with any gas & vapor filter - see above for assigned protection			
ASRAS0037AZ	P1P Filters	EN 14387:2021				

* WEL - Workplace Exposure Limit, **Assigned Protection Factor (HSG53 HSE Guide) (HSE EH40 Workplace Exposure Limits)

CERTIFICATION

Authorised Representative [EU]: Globus EMEA Ltd., 51 Dawson Street, Dublin, D02 AN25, Ireland. Product conforms to the requirement of: UK Regulation 2016/425 on PPE, brought into UK Law and amended & Regulation (EU) 2016/425 of the European Parliament and of the Council as Personal Protective Equipment (PPE).

Type-Examination, (Module B), Certificates issued by: UK - CCQS UK Ltd., Level 2, 5 Harbour Exchange Square, London, E14 9GE, UK. [A.B. No. 1105]. EU - CCQS Certification Services Ltd., Block 1 Blanchardstown Corporate Park, Ballycoolin Road, Blanchardstown, Dublin D155 AKK1, Ireland. [N.B. No. 2834].

PPE is subject to the conformity assessment procedure, conformity to type based on Quality Assurance of the production process, (Module D), under the surveillance of the Approved/Notified Body(-ies): UK - SGS UK Ltd., Rossmore Business Park, Ellesmere Port, Cheshire, CH65 3EN, UK. [A.B. No. 0120]. EU - SGS Fimko Oy, Takomtie 8, FI-00380, Helsinki, Finland. [N.B. No. 0598].